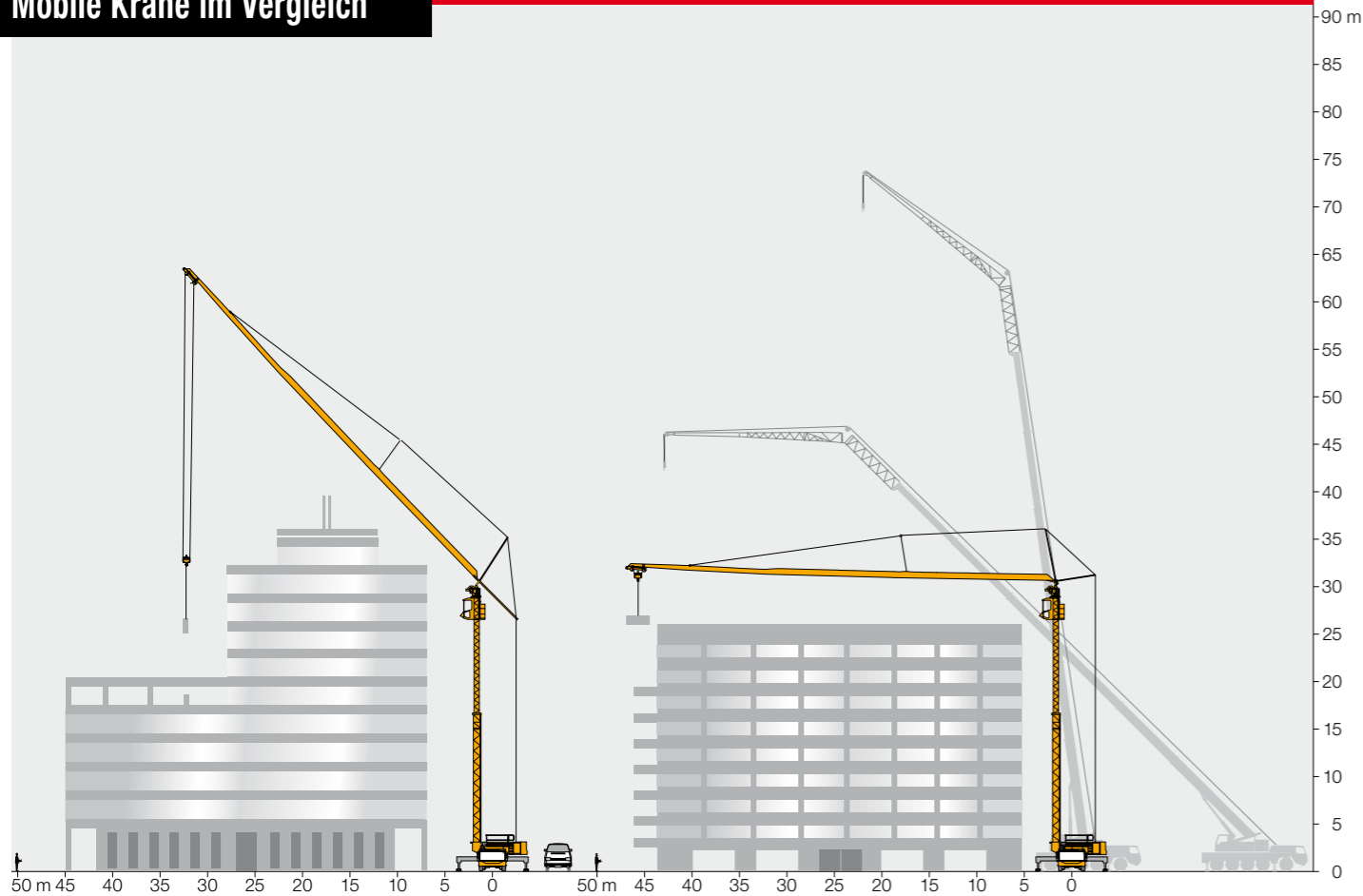
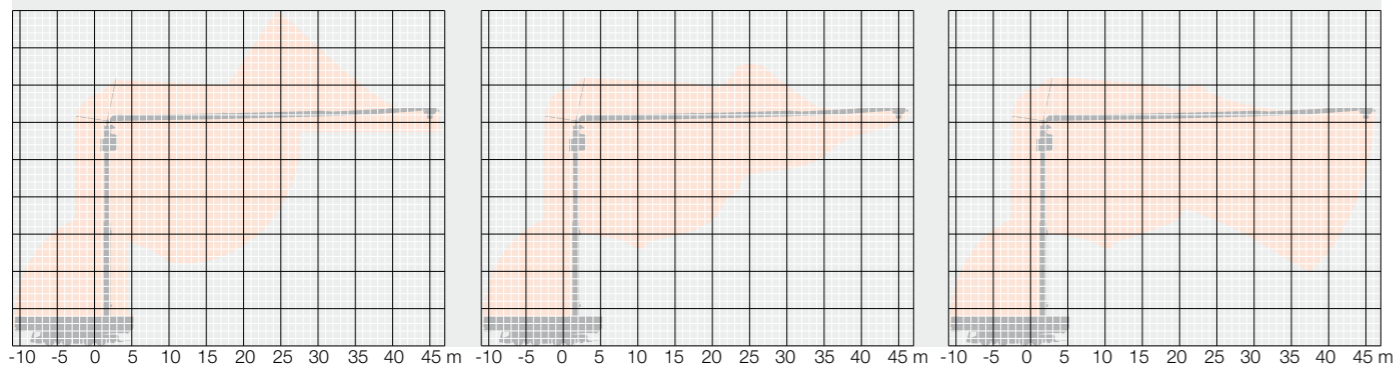


Mobile Krane im Vergleich



Aufstellkurve



Printed in Germany C7-LBC
Sämtliche Angaben erfolgen ohne Gewähr. Änderungen vorbehalten.

Autokranbetrieb R. KÖLCH & SOHN

Mobilbaukran MK 88 Plus

Größter und stärkster 4-Achser im Markt



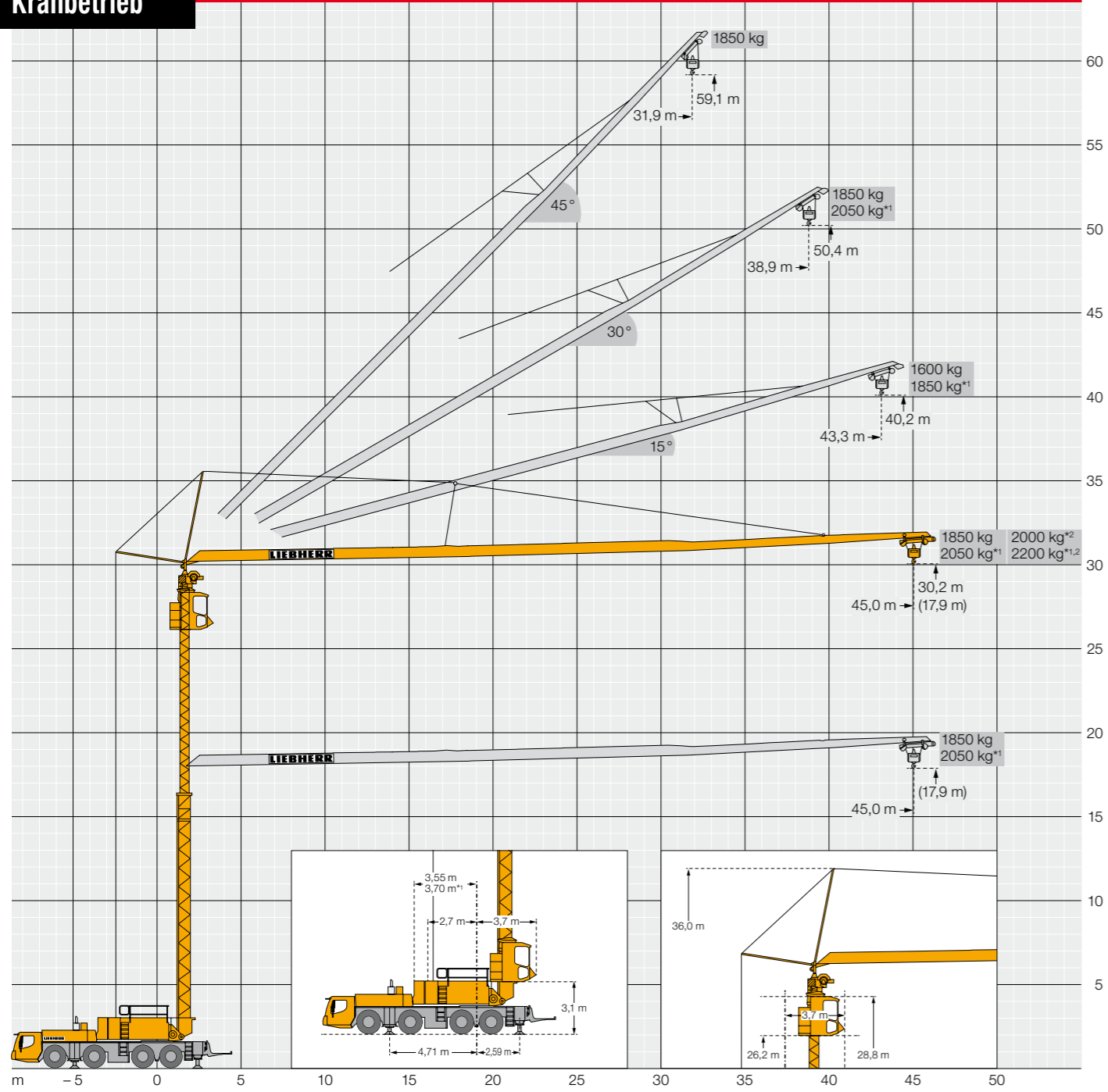
Autokranbetrieb R. KÖLCH & SOHN

KÖLCH & SOHN GmbH
Braunsbacher Straße 38
90765 Fürth
Telefon: 09 11 / 30 10 93
Fax: 09 11 / 30 59 35
info@koelch-krane.de
www.koelch-krane.de

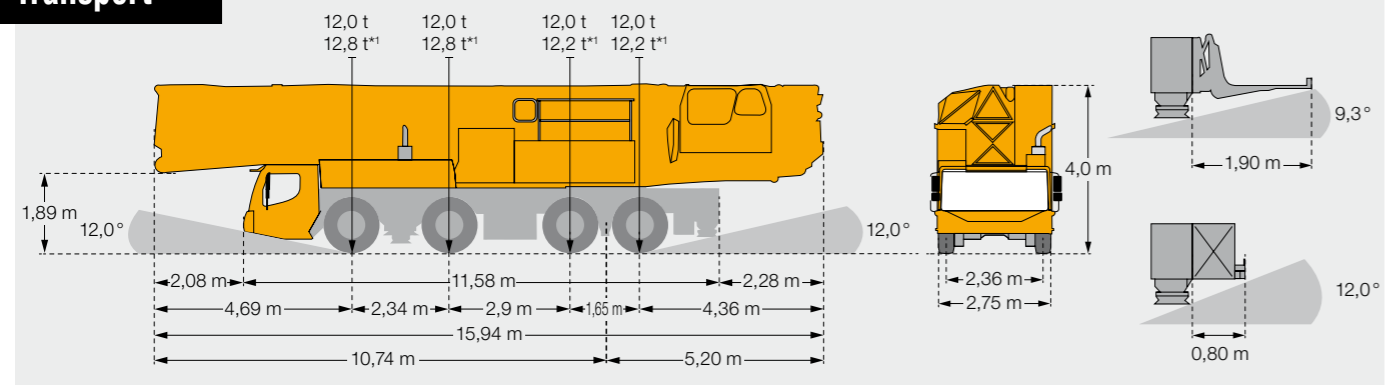
Höchste Hakenhöhe: 59,1 m // Maximale Ausladung: 45,0 m
Höchste Traglast an der Spitze: 2200 kg (mit Zusatzballast)
Hohe Montagekurve // Steilstellungen: 15°, 30° und 45°
Ein-Mann-Montage in 11 Minuten (aus dem abgestützten Stand)

LIEBHERR

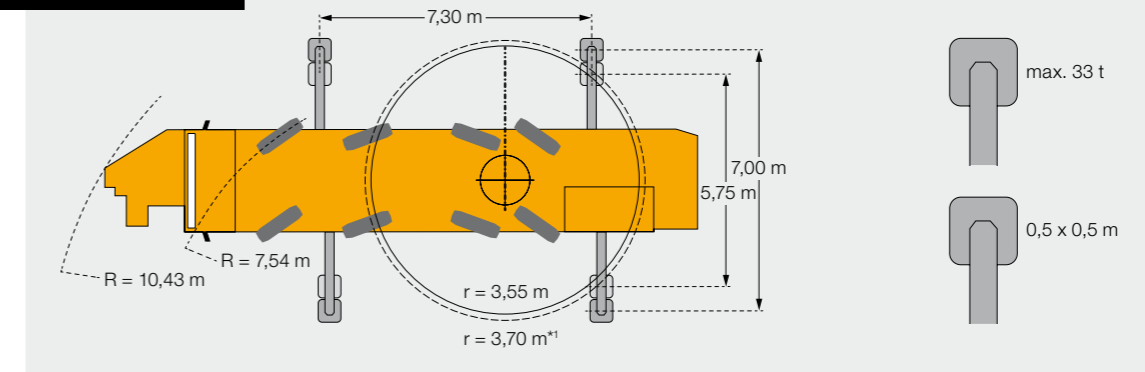
Kranbetrieb



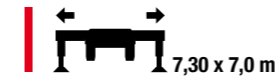
Transport



Draufsicht



MK 88 Plus, mit Zusatzballast*1



| α° | m | kg | m | | | | | | | | | | | | | | | | | | | |
|-----|--------|------------|------|------|------|------|------|------|------|------|------|------|------|------|------|------|--------|------|------|------|------|------|
| | | | 10,0 | 12,0 | 14,0 | 16,0 | 18,0 | 20,0 | 22,0 | 24,0 | 26,0 | 28,0 | 30,0 | 32,0 | 34,0 | 36,0 | 38,0 | 40,0 | 42,0 | 44,0 | 45,0 | |
| 0° | 45,0 | 3,3 - 12,0 | 8000 | 8000 | 8000 | 6900 | 6070 | 5410 | 4870 | 4420 | 4050 | 3730 | 3450 | 3210 | 2990 | 2800 | 2630 | 2480 | 2340 | 2220 | 2100 | 2050 |
| | | 3,3 - 11,0 | 8000 | 8000 | 7370 | 6360 | 5580 | 4960 | 4460 | 4050 | 3700 | 3400 | 3140 | 2920 | 2720 | 2540 | 2390 | 2250 | 2120 | 2000 | 1900 | 1850 |
| 0° | Plus*2 | 3,3 - 13,0 | 8000 | 8000 | 8000 | 7490 | 6600 | 5900 | 5320 | 4840 | 4440 | 4090 | 3790 | 3530 | 3300 | 3090 | 2920 | 2760 | 2600 | 2440 | 2280 | 2200 |
| | | 3,2 - 40,0 | 1850 | | | | | | | | | | | | | | | | | | | |
| 15° | 43,3 | 3,2 - 35,0 | 1850 | | | | | | | | | | | | | | 1400*3 | | | | | |
| | | 3,0 - 11,0 | 6000 | 5650 | 5050 | 4560 | 4150 | 3810 | 3510 | 3250 | 3030 | 2830 | 2650 | 2490 | 2350 | 2220 | 2050 | | | | | |
| 30° | 38,9 | 3,0 - 9,0 | 5620 | 4970 | 4450 | 4020 | 3660 | 3360 | 3100 | 2870 | 2670 | 2490 | 2340 | 2200 | 2070 | 1950 | 1800 | | | | | |
| | | 2,7 - 31,9 | 1850 | | | | | | | | | | | | | | | | | | | |
| 45° | 31,9 | 2,7 - 31,9 | 1850 | | | | | | | | | | | | | | | | | | | |



| α° | m | kg | m | | | | | | | | | | | | | | | | | | | |
|-----|------|------------|------|------|------|------|------|------|------|------|------|------|------|------|------|------|------|--------|------|------|------|------|
| | | | 10,0 | 12,0 | 14,0 | 16,0 | 18,0 | 20,0 | 22,0 | 24,0 | 26,0 | 28,0 | 30,0 | 32,0 | 34,0 | 36,0 | 38,0 | 40,0 | 42,0 | 44,0 | 45,0 | |
| 0° | 45,0 | 3,3 - 10,5 | 8000 | 8000 | 6930 | 5870 | 5080 | 4470 | 3980 | 3580 | 3250 | 2970 | 2730 | 2520 | 2340 | 2180 | 2030 | 1910 | 1790 | 1690 | 1590 | 1550 |
| | | 3,3 - 9,5 | 8000 | 7590 | 6310 | 5380 | 4680 | 4130 | 3690 | 3320 | 3020 | 2760 | 2540 | 2350 | 2180 | 2030 | 1900 | 1780 | 1680 | 1580 | 1490 | 1450 |
| 15° | 43,3 | 3,2 - 34,0 | 1850 | 1850 | | | | | | | | | | | | | | 1450*3 | | | | |
| | | 3,2 - 29,0 | 1850 | 1850 | | | | | | | | | | | | | | 1150*3 | | | | |
| 30° | 38,9 | 3,0 - 11,0 | 6000 | 6000 | 5580 | 4880 | 4320 | 3880 | 3510 | 3200 | 2930 | 2700 | 2500 | 2330 | 2180 | 2040 | 1910 | 1750 | | | | |
| | | 3,0 - 9,0 | 6000 | 5480 | 4650 | 4030 | 3540 | 3150 | 2830 | 2570 | 2340 | 2150 | 1980 | 1830 | 1700 | 1590 | 1490 | 1350 | | | | |
| 45° | 31,9 | 2,7 - 31,9 | 1850 | 1850 | | | | | | | | | | | | | | | | | | |
| | | 2,7 - 24,0 | 1850 | 1850 | | | | | | | | | | | | | | 1350*3 | | | | |

☰ = max. 6,5 Bft (14,0 m/sec) ☰ = max. 8,0 Bft (20,0 m/sec)

*1 Traglasten mit 2,0 t Zusatzballast

*2 Traglasten mit Plus-Paket

*3 Traglastangaben bei max. Aufbauhöhe, bei geringeren Aufbauhöhen werden höhere Traglasten erreicht. Detaillierte Angaben dazu in der Betriebsanleitung.